

A close-up photograph of a car tire tread, showing the intricate pattern of the rubber. The tire is positioned vertically on the left side of the frame. The background is blurred, showing what appears to be a parking lot or a similar outdoor setting.

Parking

Safely in Kwinana





The City of Kwinana's Rangers Services are responsible for overseeing local parking enforcement related issues within Kwinana.

Parking within Kwinana can at times be difficult, especially during peak periods. To assist with the flow and management of traffic, the City has installed specific signage to control parking within certain areas of the City.

Most of this signage is located around the Kwinana Town Centre and the Wellard Central Business districts with further signage installed along the roadways leading to and from the Kwinana and Wellard Train Station. Parking signs are also located at some of the City's key parks, reserves and schools throughout the City.

These parking controls are in place for the safety of pedestrians and road users.

Common parking offences within the City of Kwinana.



Parking on or over a Footpath

Parking on or over any footpath area is not permitted at any time. No portion of your vehicle including wheels should be on any part of a footpath area.



No Stopping or Parking on Verge

Parking on a verge is not permitted without the permission of the landowner whose property abuts the verge area.



No Stopping or Parking on Verge



Parking or Stopping in an area marked with a sign 'No Parking or Stopping' restricts the flow of traffic. These signs are in place to prevent the obstruction or hold up of traffic at all times or during specific times of days or the week. These are mainly located around school areas.

Other signage displayed allows parking for short periods. Once the time has lapsed, you are required to move your vehicle; otherwise, you are exceeding the time permitted for this parking space or bay. Failure to do so may result in a parking fine being issued.



This signage allows parking for short periods.

Solid Yellow Line



Parking where a yellow solid line is marked on the road surface, indicates that you are not permitted to park on the road surface at any time.

No Stopping or Parking on Verge

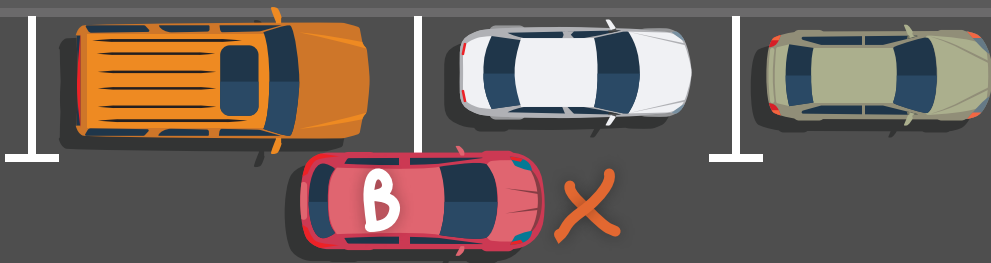
Parking or stopping a vehicle in a laneway within the City of Kwinana is not permitted. A laneway or service lane is an area, which is constructed to allow the free flow of service vehicles to and from residence and does not permit any vehicle to park or stop in this location at any time.



Double Parking

As the words state, double parking is not permitted at any time and obstructs the flow of traffic.

Vehicle B stopped in the below diagram is considered double-parked and this is an offence.



Parking Obstructions

When parking on the road, your vehicle must be parked as close as practicable to the kerbing on the left boundary, and headed in the direction of the traffic.

Ensure there is more than 3 metres of space from the driver's side of your car and the kerbing, soft verge or vehicle parked on the opposite side of the road. If this is not achievable, then parking is not permitted and penalties will apply.



Parking on a Thoroughfare for more than 24 Hours

No vehicles are permitted to be parked on a thoroughfare for more than 24 Hours. If a vehicle remains in the same place for more than 24 hours without being moved then this is consider as an obstruction and in breach of the City's Parking Local Laws and your vehicle may be impounded.



Obstructing a Driveway or Access way

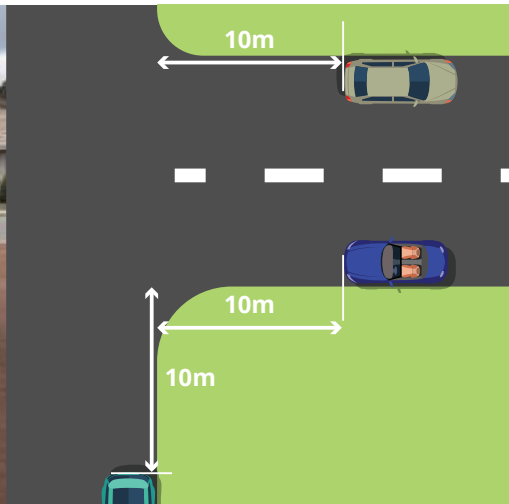


When parking your vehicle you need to ensure that you park as close to the left boundary as possible and headed in the direction of the traffic and your vehicle does not overhang or impede entry into a driveway, access way or pathway.



Parking within 10 Metres of an Intersection

A vehicle is not permitted to stop or park where any portion of the vehicle is within 10 metres of the nearest property line of any thoroughfare intersecting the thoroughfare on the side on which the vehicle is parked.



Parking in a Cul-De-Sac



No parking is permitted in a cul-de-sac where the vehicle is causing an obstruction to any vehicle trying to turn within the cul-de-sac area.

Parking in Disable Parking Bays

A vehicle is not permitted to stop or park in a disable-parking bay unless:

- (a) The driver of that vehicle displays a 'disability parking permit'
- (b) Either the driver or a passenger in that vehicle is a person with disability.

If there is no disable-parking permit displayed, then no parking is permitted within these bays at any time.





Commercial Vehicle Parking

A commercial vehicle is defined as a vehicle that has a gross vehicle mass of greater than 4.5 tonnes and/or which is greater than 7 metres in length and 2.4 metres in height.

This includes any other such vehicle as; a utility, van, truck, tractor, bus or earthmoving equipment; and any other vehicle that is designed to be an attachment to a vehicle referred to above.

A commercial vehicle is not permitted to park or stop on any thoroughfare in a built-up area within the City of Kwinana, for any period exceeding 4 hours, during the day.

No commercial vehicles are permitted on a thoroughfare, which includes the verge areas in a residential or special residential zoned area *between the hours of 6pm one day and 6am the following day* unless a permit issued has been issued by the City of Kwinana.



**A
commercial
vehicle parked
across a
pathway**



Parking in Schools

What parents and road users can do to avoid congestion in and around school is:

- plan your trip so that you arrive earlier or later to avoid the rush;
- consider carpooling;
- seek alternate parking facilities a short distance from your school and walk with your child;
- only use designated parking bays, observe all signage and listen to traffic wardens;
- remember the safety of our children and obey the road rules;
- use the kiss and drive if your school provides the facility;
- read all parking signs; and
- don't rush, take your time and please be patient.



Please be aware
that incorrect parking in the
City of Kwinana may occur an
infringement of up to \$5,000.



For more information on parking and getting around in the
City of Kwinana contact the City on 9439 0200 or
customer@kwinana.wa.gov.au or visit our website
www.kwinana.wa.gov.au/city-life/parking-and-getting-around



Administration

Cnr Gilmore Ave and Sulphur Rd,
Kwinana WA 6167

PO Box 21, Kwinana WA 6966

Telephone 08 9439 0200

customer@kwinana.wa.gov.au

kwinana.wa.gov.au

